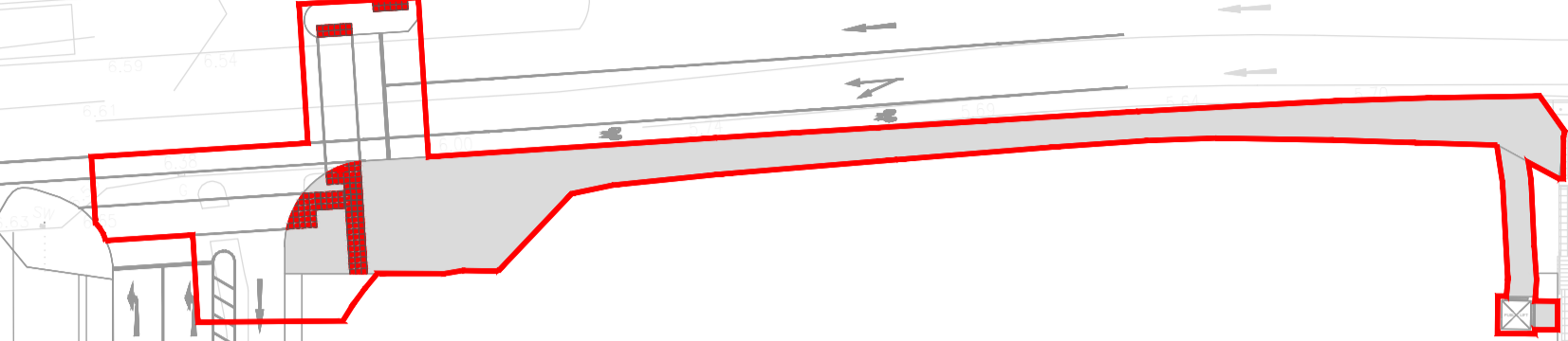
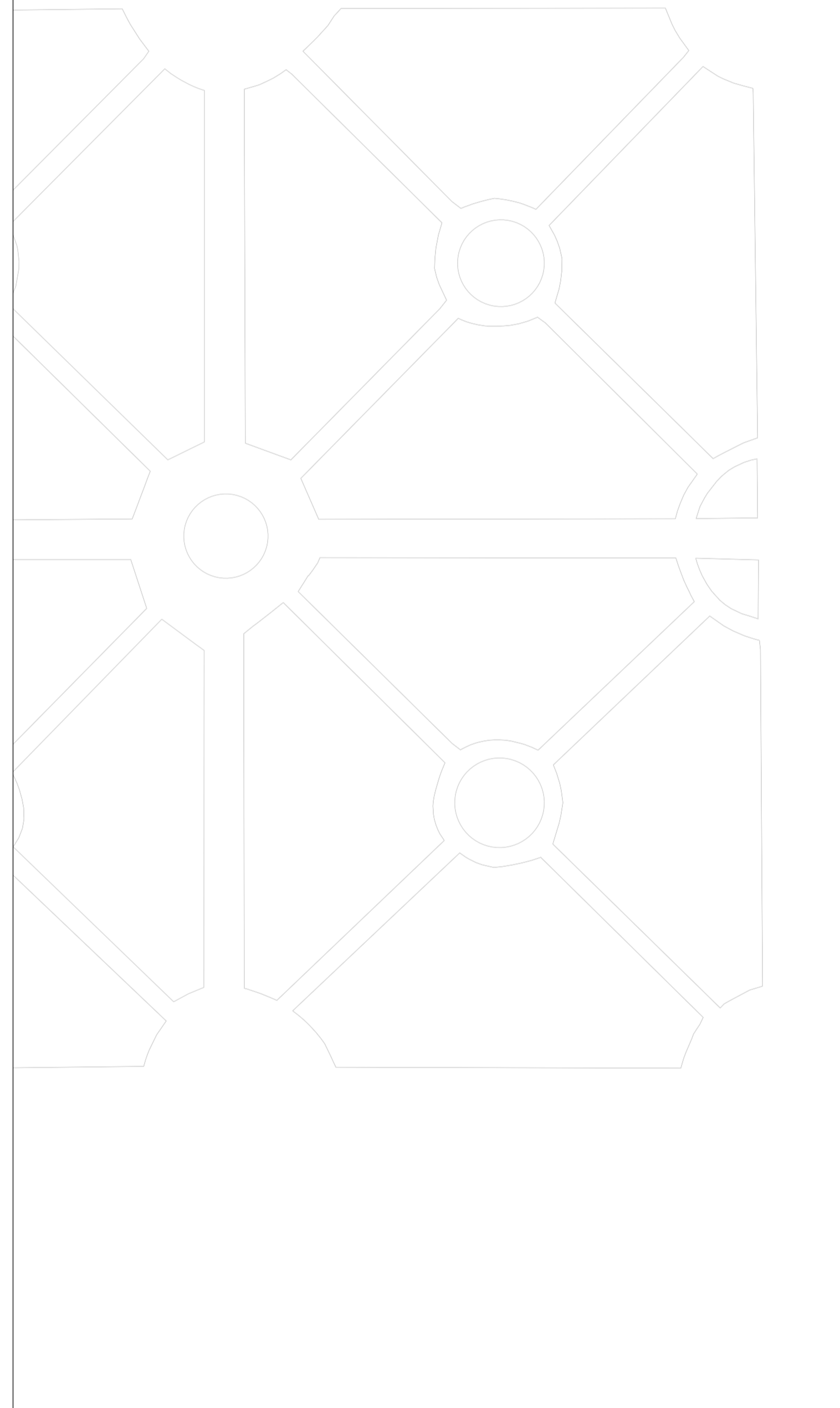
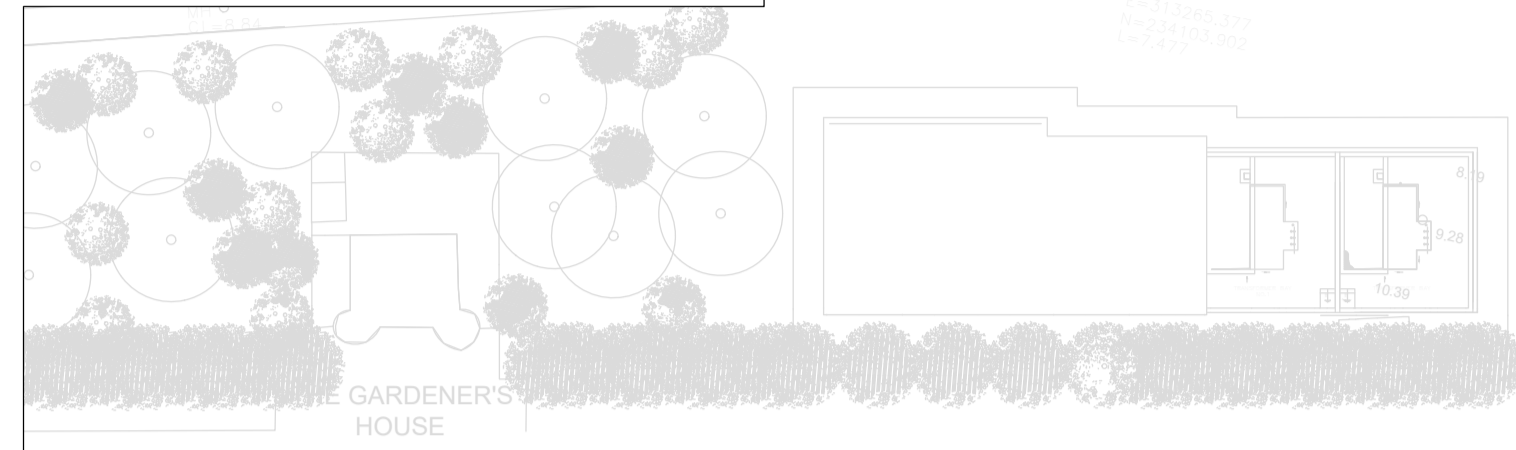
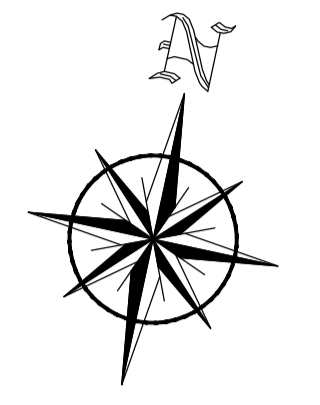
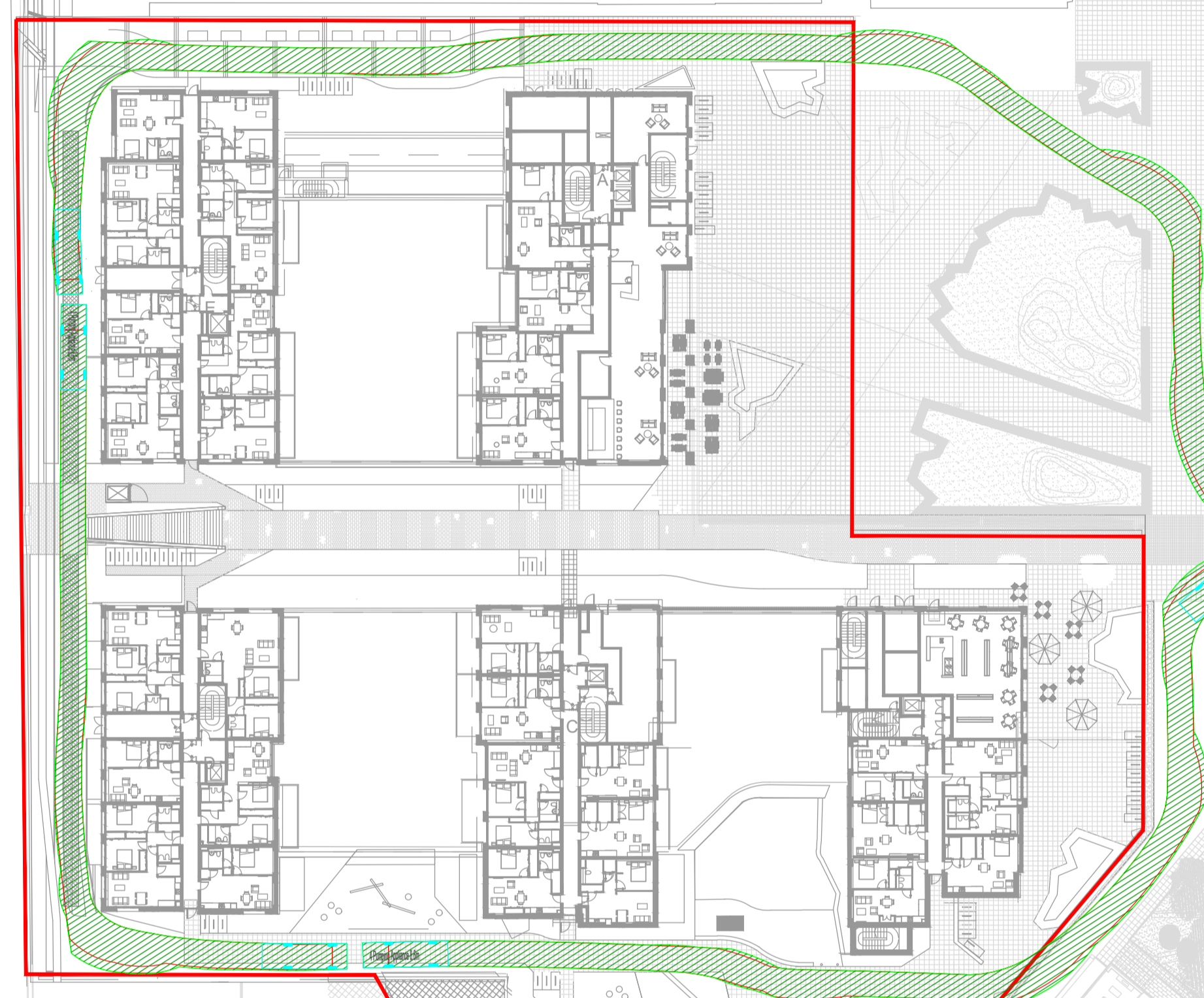


Pumping Appliance 8.6m
 Overall Length 8.600m
 Overall Width 1.500m
 Overall Body Height 4.500m
 Min Body Ground Clearance 1.500m
 Track Width 1.500m
 Lock-to-lock time 4.00s
 Curb to Curb Turning Radius 7.750m



SUBJECT TO A SEPARATE PLANNING APPLICATION



SWEPT PATH ANALYSIS-FIRE TENDER.
 SCALE 1:500

PLANNING DRAWING.
NOT FOR CONSTRUCTION.
 ALL LEVELS GIVEN ARE
 RELATIVE TO ORDNANCE DATUM.
 THIS DRAWING HAS BEEN ISSUED FOR INFORMATION
 PURPOSES ONLY AND MUST NOT BE USED
 FOR CONSTRUCTION UNDER ANY CIRCUMSTANCES

NOTES

- For setting out refer to Architect's drawings.
- This drawing to be read in conjunction with all other Architectural and Engineering drawings and all other relevant drawings and Specifications.
- DO NOT SCALE THIS DRAWING. Use figured dimensions only.
- No part of this document may be reproduced or transmitted in any form or stored in any retrieval system of any nature without the written permission as copyright holder except as agreed for use on the project for which the document was originally issued.
- Ordnance Survey Ireland Licence Number EN 0074021

Rev. No	Date	REVISION NOTE	Dim. By	Chkd. By
P1	17.09.2021	ISSUED FOR PLANNING STAGE 3	JS	GF

Architect	Reddy Architecture			
Project	HEUSTON SOUTH QUARTER, ST. JOHN'S ROAD WEST, KILMAINHAM			
Title	SWEPT PATH ANALYSIS FIRE TENDER PODIUM LEVEL			
Dwg. No.	HSQ-CSC-XX-XX-DR-C-0113			
Date	Dim by	Chkd by	Aprvd by	Scale
JULY 2021	JS	DM	RFM	1:500 @ A1
Revision				P1

CS Consulting Group
 DUBLIN | LONDON | LIMERICK

Head Office
 19-22 Dame Street, Dublin 2.
 T: +353 (0)1 5480863 F: +353 (0)1 9011355
 e: info@csconsulting.ie
 w: www.csconsulting.ie

NSAI Certified

Quality Environment Health & Safety
 I.S. EN ISO 9001:2008
 I.S. EN ISO 14001:2004
 I.S. EN ISO 50001:2011
 OHSAS 18001:2007